



Usage analytics

Tags: **Skills**

Usage analytics gives you a breakdown of your team's viewing history and usage of video courses.

In this article

[What you can do](#)

[Web report](#)

[CSV report](#)

[Next steps](#)

	Who can use this?				
	<u>Std</u>	<u>Prem</u>	<u>Strt</u>	<u>Pro</u>	<u>Ent</u>
<u>Learners:</u>					
<u>Managers:</u>			✓	✓	✓
<u>Admins:</u>			✓	✓	✓

What you can do

Usage analytics presents you with relevant data about the activity happening within your team. The granular data presented can help you:

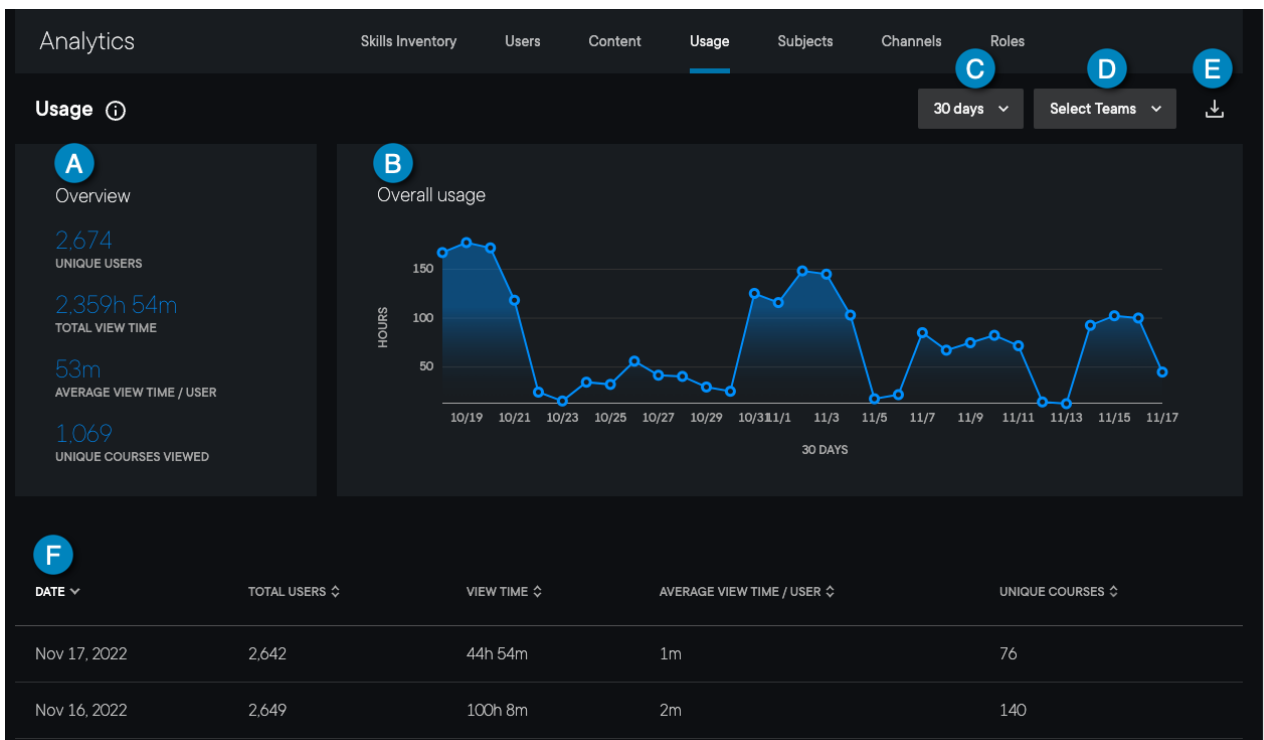
- See average daily view times for video courses within your team
- Find the trending learning days, weeks, or months for your team
- Gain a broad understanding of how your team is interacting with video courses
- Spot how many of the licenses purchased have taken a course

[back to top](#)

Web report

To get started:

1. Click **Analytics** in the left navigation panel.
2. Click the **Usage** tab in the top center panel.



A. The **Overview** gives you an at-a-glance view of your team's overall usage. The data fields include:

- Unique users
- Total view time
- Average view time/user
- Unique courses viewed

B. **Overall usage** shows you the daily, weekly, or monthly usage trends—depending on your selection in the date range filter. Hovering over a data point reveals detailed time totals.

C. You can customize both the web and CSV reports with the **date range** filter.

D. You can customize both the web and CSV reports with the **teams** filter. To view unassigned users, make sure all teams are deselected.

E. You can download a **CSV report** of your analytics data (discussed below).

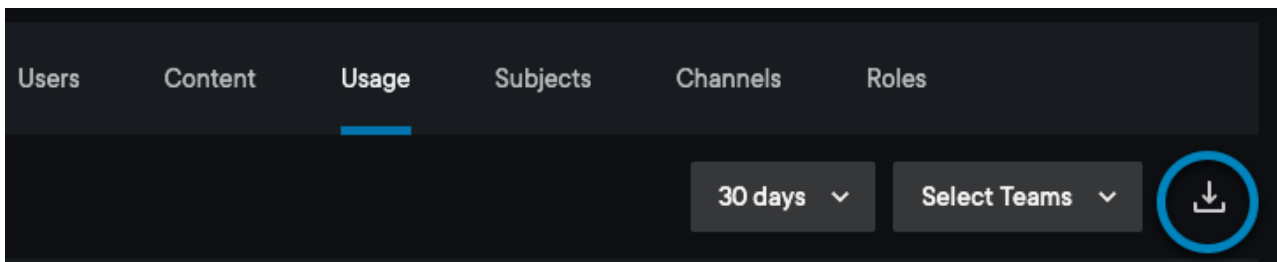
F. The **Usage table** gives you a breakdown of your team's usage by date. The data fields include:

- Date
- Total users
- View time
- Average view time/user
- Unique courses

[back to top](#)

CSV report

View more details about your usage analytics with the CSV report download. To download the CSV, click the **download** icon next to the **Select teams** filter.



Data fields for the report include:

- [Account Name](#)
- [Date](#)
- [Year](#)
- [Month](#)
- [Plan Total Licenses](#)
- [Team Name](#)
- [Total Members](#)
- [Total Hours](#)
- [Unique Courses](#)

[back to top](#)

Next steps

Explore how the other analytics experiences can help you monitor and guide your team's growth.

Basic analytics	Advanced analytics
Channels analytics: basic	Channels analytics: advanced
Content analytics	Roles analytics: advanced
Roles analytics: basic	Skills inventory analytics: advanced
Skills inventory analytics: basic	
Subjects analytics	
Usage analytics	
Users analytics	

Basic analytics

Advanced analytics

See which analytics experiences are included in [your team plan](#).

If you need help, please email support@pluralsight.com for 24/7 assistance.