



Azure DevOps Services (VSTS) setup

Tags: **Flow**

Follow this step-by-step guide to connect your Microsoft Azure DevOps Services (ADO) account to Flow.

Note: This integration is only for Azure DevOps Services (ADO Cloud). If you use Azure DevOps Server, follow the instructions for [creating an Azure DevOps Server integration](#).

Before getting started, make sure your system is supported. Git repos are supported. TFVC repos are not supported.

If PRs have not been updated, deleted, abandoned, or created within the six months prior to the initial integration processing date, the PR will not be ingested into Flow and will not appear in reports.

Important: Use a service account to create this integration. Learn more about [creating a service account](#).

In this article

[Permission requirements](#)

[Azure DevOps Services configuration](#)

[Connect via OAuth](#)

[Creating a personal access token](#)

[Finalizing the connection](#)

[Import repos](#)

[Troubleshooting](#)

Who can use this?

<u>Core</u>	<u>Plus</u>
✓	✓

Permission requirements

There are three requirements to use integration services like repos, pull requests, tickets and webhooks:

1. Set up personal access token scopes. Follow the instructions below to learn more.
2. Make sure the service account is set up as a Project Collection Administrator at the organizational level.
3. Your git host may not require webhooks. If this is the case, set the git host's **View instance-level information** permission to **Allow**. This permission is required to establish a connection and import repos.

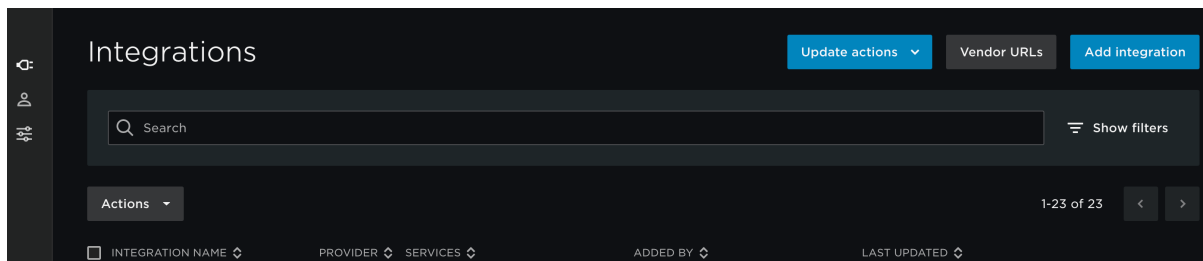
Add the user to the reader group at the project level.

[back to top](#)

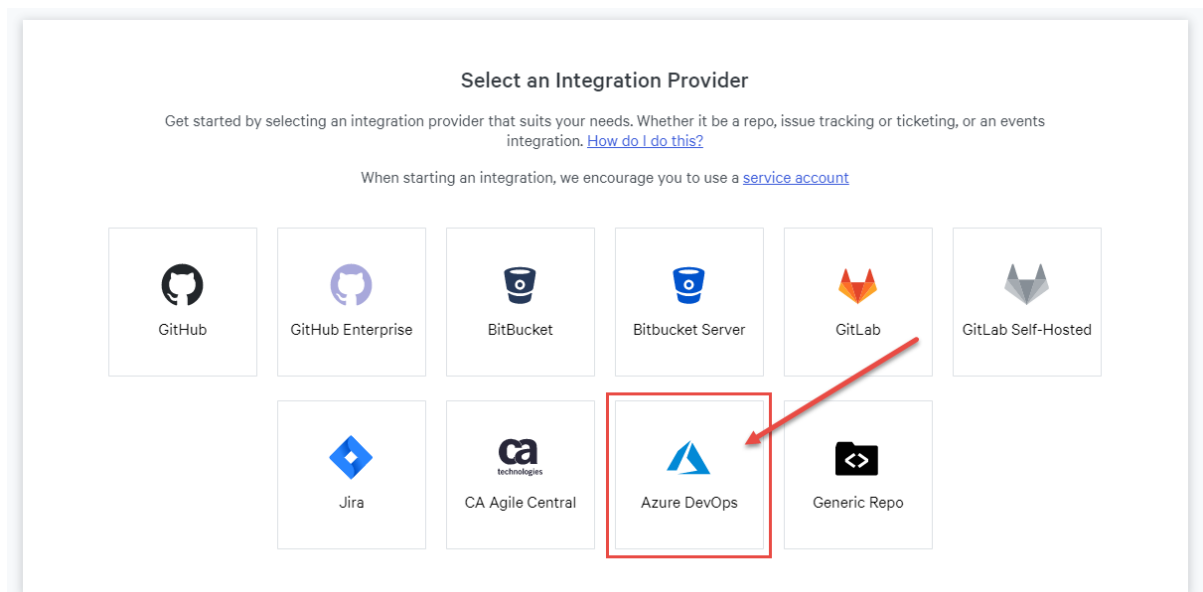
Azure DevOps Services configuration

Follow these steps to set up your Azure DevOps Services configuration.

1. Click **Settings** In Flow's top navigation.
2. In the left navigation under **Integrations**, click **Integrations**.
3. Click the **Add Integration** button in the top right corner of the Integrations page.

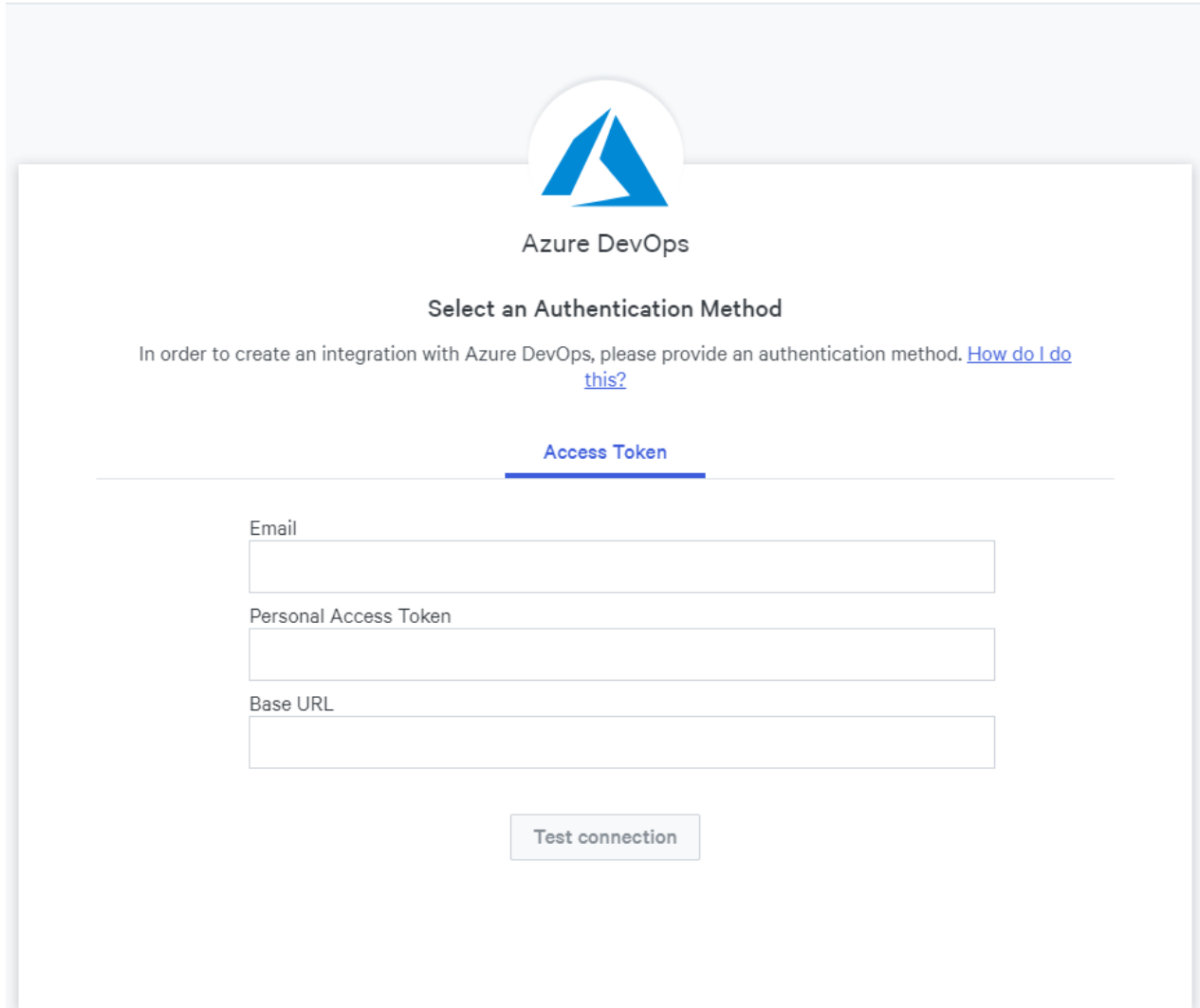



4. On the following Integration Provider page, click **Azure DevOps**.



5. Select if you want to connect via OAuth or via Access token.
6. Input your email address, Personal access token, and Base URL. Use the exact email format seen in your Azure user profile. The email field is case sensitive. Your URL will look like `https://dev.azure.com/{yourorganization}`.

Note: Use the `https://dev.azure.com` domain in the Base URL field in Flow to connect successfully. This applies even if your base URL in Azure DevOps Services uses the `visualstudios.com` domain.




Azure DevOps

Select an Authentication Method

In order to create an integration with Azure DevOps, please provide an authentication method. [How do I do this?](#)

Access Token

Email

Personal Access Token

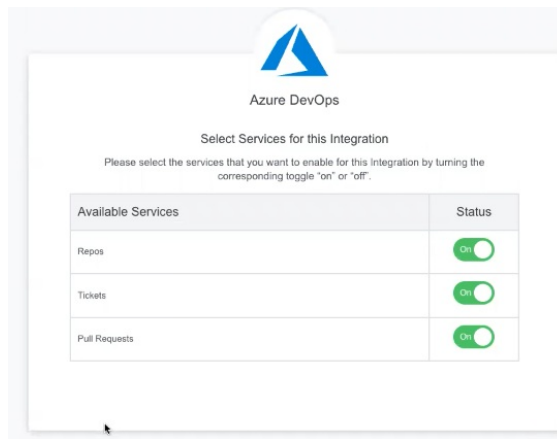
Base URL

[back to top](#)

Connect via OAuth

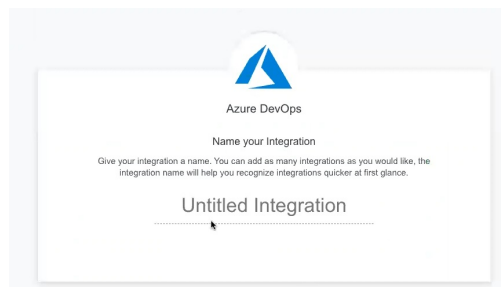
To connect to ADO via OAuth:

1. Select the OAuth tab on the Select Authentication Method page.
2. Click Connect to Azure DevOps.
3. Follow the prompts to sign into your ADO account.
4. In ADO, select the organization you want to connect to Flow.
5. Copy and paste the base URL from ADO into the Base URL field. Your URL will look like `https://dev.azure.com/{yourorganization}`.
6. Click Test URL.
7. On the following page, use toggles to select the available services you want ingested by Flow.



8. Click Next.

9. Name the integration.



10. Click Create.

Flow will take you to the new integration's Integration page and your integration will be listed on the Integrations page.

[back to top](#)

Creating a personal access token

To create a personal access token in Azure DevOps Services:

1. Locate **Personal access tokens** under your user settings.
2. On the **Personal access token** page, click **New Token**.
3. Fill in the following information for your new personal access token:
 - Name
 - Organization
 - Expiration date
 - Scopes - Below find the minimum scopes required to connect your account.
 - Code: Read
 - Build: Read
 - Graph: Read

- Identity: Read
- Project and Team: Read
- Work Items: Read

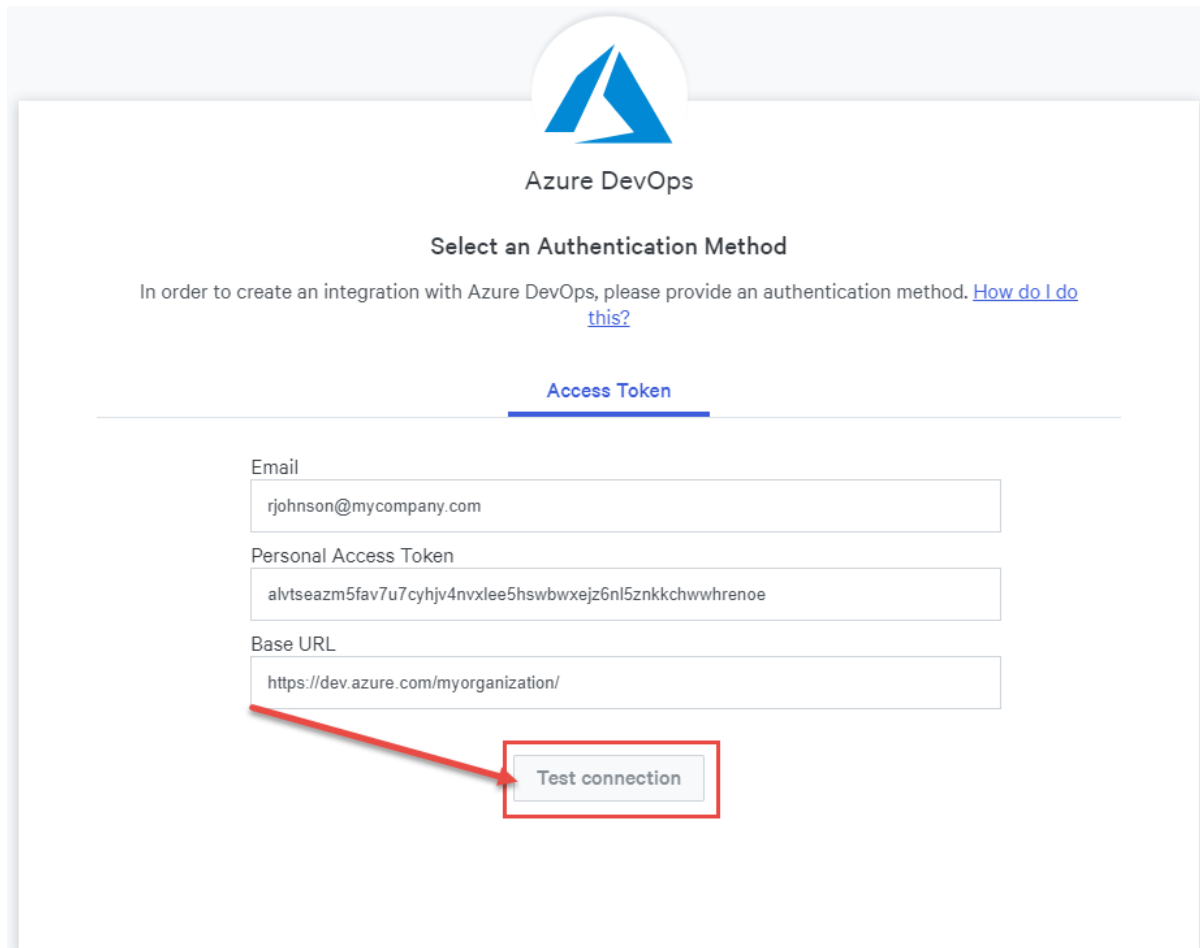
4. Click **Save**.

[back to top](#)

Finalizing the connection

After creating a personal access token, complete your integration setup in Flow.

1. Copy your access token and paste it into the Flow **Personal Access Token** field.
2. Click **Test connection**.



Azure DevOps

Select an Authentication Method

In order to create an integration with Azure DevOps, please provide an authentication method. [How do I do this?](#)

Access Token

Email
rjohnson@mycompany.com

Personal Access Token
alvtseazm5fav7u7cyhjv4nvxlee5hswbwxejz6nl5znkchwwhreno

Base URL
https://dev.azure.com/myorganization/

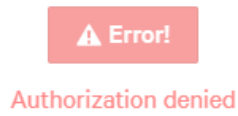
Test connection

3. If the connection is successful, you'll see a **Successfully connected** message:

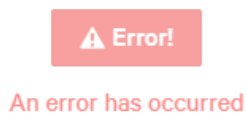
✓ Success

Successfully connected via **rjohnson@mycompany.com**

If you receive an **Authorization denied** error when trying to connect your Azure DevOps Services account, verify that the access token is correct and try again.



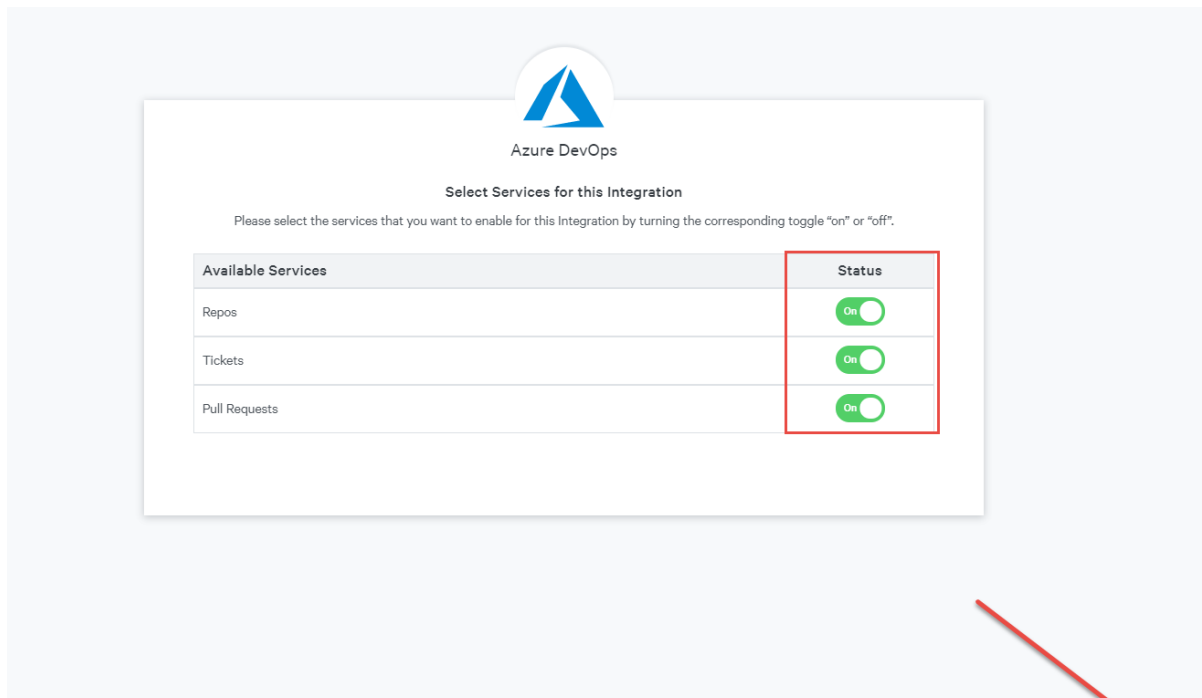
If you receive **An error has occurred** error, verify the email and base URL are correct and try again.



4. After connecting to your Azure DevOps Services account, click **Next**.

A screenshot of the Azure DevOps authentication interface. At the top, the Azure DevOps logo is displayed. Below it, the text "Select an Authentication Method" is shown, followed by a link "How do I do this?". The "Access Token" method is selected and underlined. Three input fields are visible: "Email" with the value "rjohnson@mycompany.com", "Personal Access Token" with a long alphanumeric string, and "Base URL" with the value "https://dev.azure.com/myorganization/". A green "Success" button is present, and below it, the text "Successfully connected via rjohnson@mycompany.com" is displayed. At the bottom right, there are two buttons: "Back" and "Next". A red arrow points from the "Next" button towards the bottom right corner of the screenshot.

5. On the next screen, choose which services to turn on for this integration. To import pull request and ticket data in addition to repo data, leave all services on. You can turn services **on** and **off** at any time. Click **Next**.



Note: Azure DevOps Services Work Items are generally mapped to Tickets in Flow.

6. Name the integration to identify the account you connected. Click **Create**.
7. Import your repos by going to your repo import page. Click the **repo import page** link. To learn more about managing your new Integration settings, see [Manage integrations](#).

[back to top](#)

Import repos

After creating the Azure DevOps integration, import your repos.

1. Click **Settings** in the top navigation.
2. In the left hand navigation, click **Integrations**.
3. Click the integration you just created.
4. Go to the Repos tab.
5. Click the **Repo import page** link.

To learn more about managing your new Integration settings, see [Manage integrations](#).

[back to top](#)

Troubleshooting

Follow these troubleshooting steps if you're having trouble connecting your integration.

1. If your integration does not test successfully, check your credentials.
 - Verify your email address is the same case and spelling as seen in your Azure Profile. The email field is case sensitive.
 - Review the scopes in your access token to ensure all required scopes have been selected.
 - Confirm your base URL adheres to the required format: `https://dev.azure.com/{yourorganization}`
2. If you're unable to enable webhooks, check your Azure user permissions. In order to enable webhooks, you must be a Project Collection Administrator.
3. If all your ADO Services ticket projects show as **Vendor not supported** on the [Ticket projects page](#) after your data is imported, contact [Pluralsight Support \(opens email form\)](#) or your Pluralsight Flow contact to unblock your repos and projects. Learn more about [configuring ticket projects](#).

If you need help, please contact [Pluralsight Support](#).