

Trends

Trends shows your team's recent activity trends during a release cycle. View the productivity of your team in a sprint by sprint view or a month by month view.

In this article

[What can you do with Trends?](#)

[How do I filter for my teams' trends?](#)

[How do I view productivity metrics?](#)

What can you do with Trends?

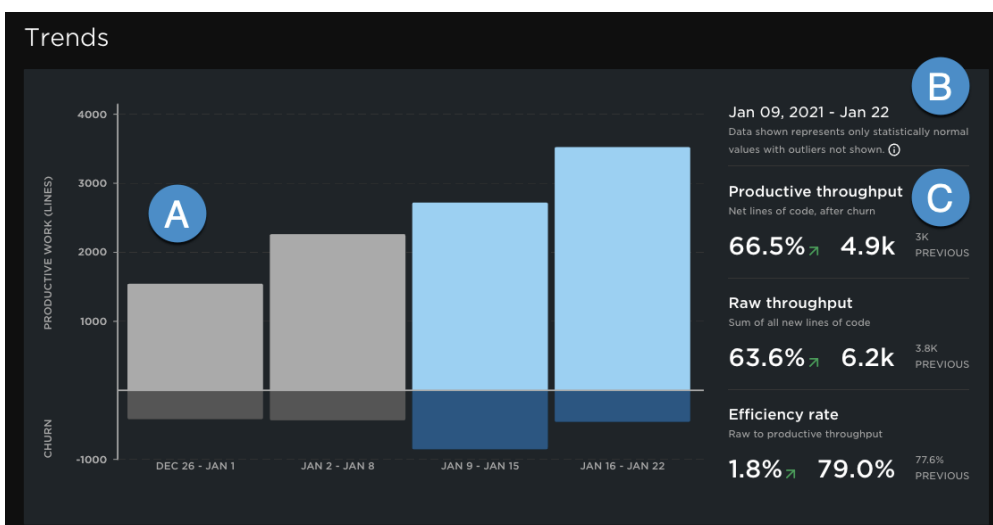
As a team leader or manager you can:

1. Quickly get an overview of your productivity metrics
2. Use trends in sprint retrospective meetings for a complete picture of your teams' productivity.
3. Quickly see how your teams' productive work compares to churn
4. Use alongside [Project Timeline](https://help.pluralsight.com/help/project-timeline) to understand the velocity and work focus over each release cycle

[back to top](#)

How do I filter for my teams' trends?

To view your team's trends, first set the filter to the teams, users, and time period you want to view. Learn more about [filtering reports](https://help.pluralsight.com/help/filtering-reports). Once your filter is set, view your trends in the trends table.



1. The bar graph provides a quick overview of how your teams' productivity compares to churn.
2. This is the date range selected in the filter.
3. The productivity metrics capture productive throughput, raw throughput, and efficiency rate

Note: The Trends report **does not** capture outlier data. Learn more about [outlier detection](https://help.pluralsight.com/help/advanced-outlier-detection-settings) (<https://help.pluralsight.com/help/advanced-outlier-detection-settings>).

[back to top](#)

How do I view productivity metrics?

The productivity metrics table provides a quick overview of your team's productivity.

Productivity Metrics			
Typical user's productivity within selected period			
tt100 - Productive code Time to 100: hours required to net 100 lines of code, after churn	29.3% ↘	13.9 HOURS	19.7 PREVIOUS
tt100 - Raw code Time to 100: number of hours required to gross 100 lines of code	28.0% ↘	11.0 HOURS	15.3 PREVIOUS
Coding days Days per week with commits in the selected period	11.8% ↗	1.9 DAYS	1.7 PREVIOUS
Commits per active day Average number of commits when active	13.9% ↗	2.6 COMMITS	2.2 PREVIOUS

[back to top](#)

If you need help, please email support@pluralsight.com () for 24/7 assistance.